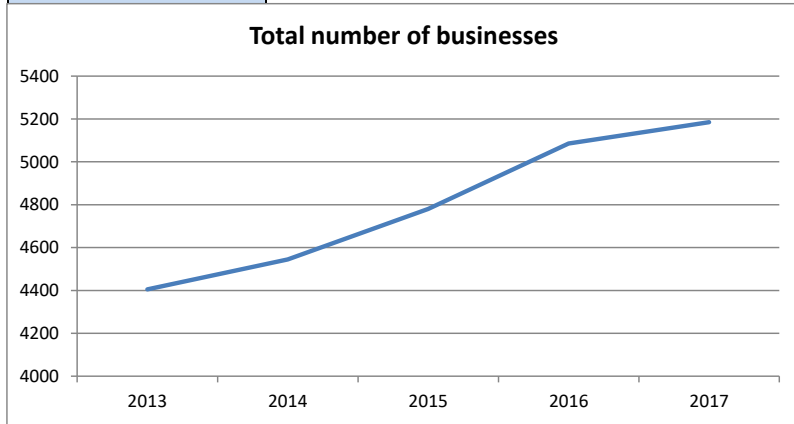
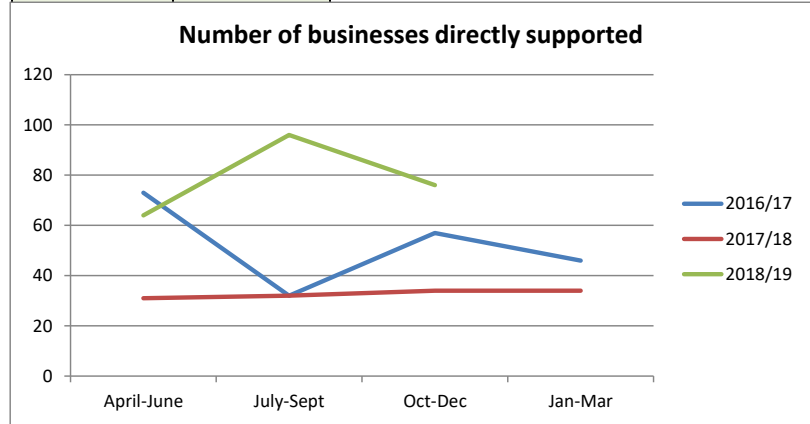


## Swale Economic Regeneration Data

Total number of businesses		
Source: UK Business Demography, ONS		Latest data: 2017
Frequency of data: Annual		Next release date: To be announced
Year	Total number of businesses	Comments
2013	4405	The number of businesses in Swale has increased by 18% during the last 5 years, with a 2% increase between 2016 and 2017. The figure compares closely with the last 5 years for Kent which is also 18% and Great Britain at 20%. Similarly, the increase also follows the trend over the last year in Kent at 3% and Great Britain at 3%.
2014	4545	
2015	4780	
2016	5085	
2017	5185	



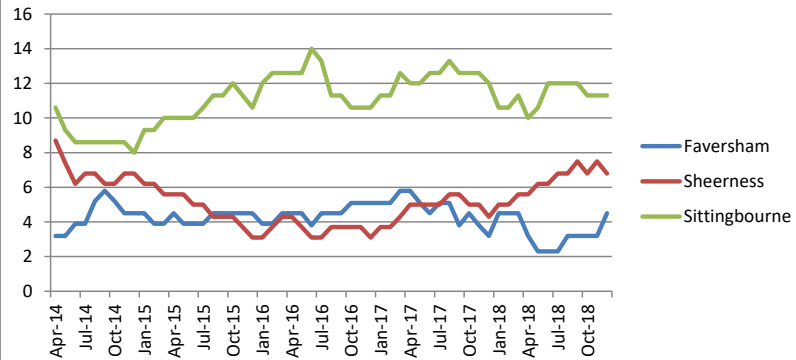
Number of businesses directly supported		
Source: Economic Development Enquiry Numbers, SBC		Latest data: Oct-Dec 2018
Frequency of data: Quarterly		Next release date: February 2019
Quarters	Total number of businesses	Definition
July-Sept 2016	32	The figure represents the number of new enquiries registered within the last quarter, the number who have continued to receive support and the number attending the Starting in Business Workshops/121 advice meetings. The figure is adjusted to make sure that the same enquiry is not double counted.
Oct-Dec 2016	57	
Jan-Mar 2017	46	
April-June 2017	31	
July-Sept 2017	32	
Oct-Dec 2017	34	
Jan-Mar 2018	34	
April-June 2018	64	
July-Sept 2018	96	
Oct-Dec 2018	76	



## Swale Economic Regeneration Data

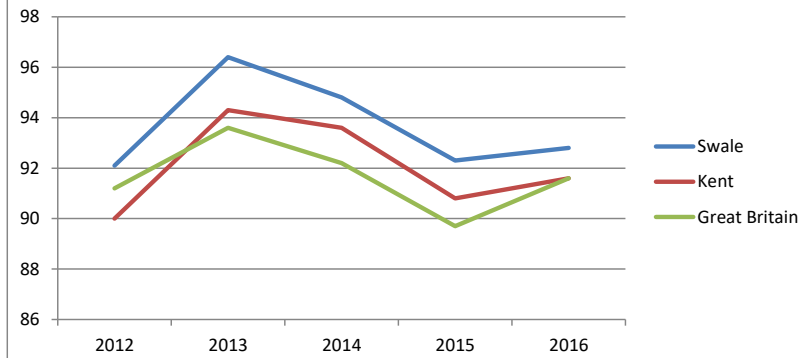
Vacancy Rates			
Source: Economic Development survey of high streets, SBC		Latest data: December 2018	
Frequency of data: Monthly		Next release date: February 2019	
Comments			
The average vacancy rate for England is 11.1% (source: The Local Data Company, Retail & Leisure Trends, September 2017).			
Month	Faversham	Sheerness	Sittingbourne
Aug-18	3.2	6.8	12.0
Sep-18	3.2	7.5	12.0
Oct-18	3.2	6.8	11.3
Nov-18	3.2	7.5	11.3
Dec-18	4.5	6.8	11.3

**Swale Vacancy Rates by High Street**



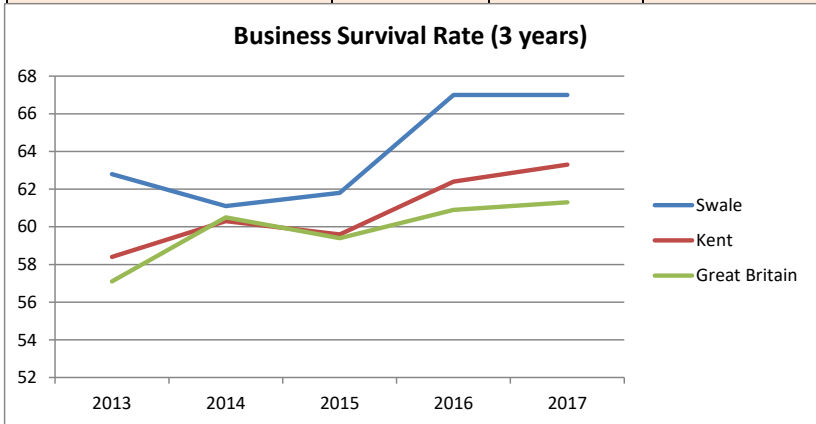
Business Survival Rate (1 year)			
Source: Business Demography Dataset, ONS		Latest data: 2016	
Frequency of data: Annual		Next release date: November 2019	
Comments			
The number of businesses surviving in Swale over 1 year is slightly above the rate seen in the South East and Great Britain, although at present it is a marginal amount. Swale continues to mirror the overall national trend.			
Year	Swale	Kent	Great Britain
2012	92.1	90.0	91.2
2013	96.4	94.3	93.6
2014	94.8	93.6	92.2
2015	92.3	90.8	89.7
2016	92.8	91.6	91.6

**Business Survival Rate (1 year)**

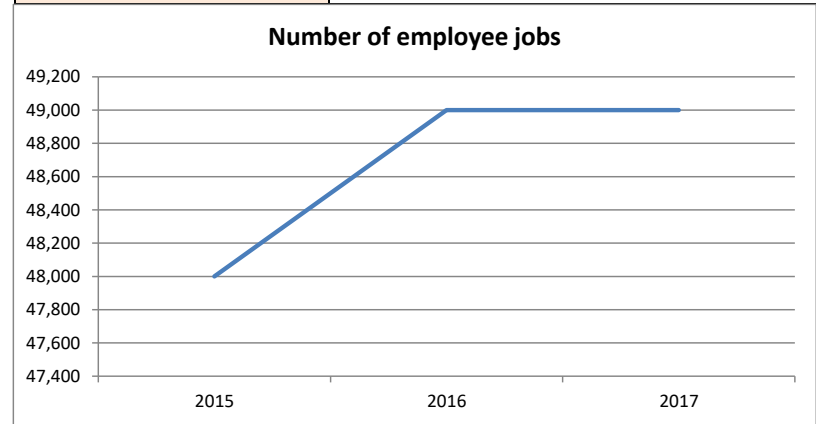


## Swale Economic Regeneration Data

Business Survival Rate (3 year)			
Source: Business Demography Dataset, ONS		Latest data: 2017	
Frequency of data: Annual		Next release date: November 2019	
Comments			
The number of businesses surviving in Swale over 3 years is also slightly above the rate seen in the South East and Great Britain, although at present it is a marginal amount. Swale has seen a greater increase however than the average in Kent and Great Britain, in companies reaching the 3 year point.			
Year	Swale	Kent	Great Britain
2013	62.8	58.4	57.1
2014	61.1	60.3	60.5
2015	61.8	59.6	59.4
2016	67.0	62.4	60.9
2017	67.0	63.3	61.3

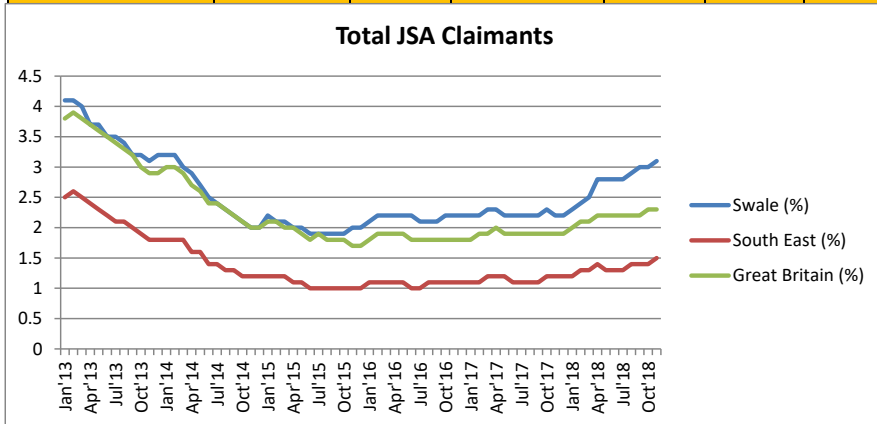


Number of employee jobs		
Source: ONS Business Register and Employment Survey		Latest data: 2017
Frequency of data: Annual		Next release date: Autumn 2019
Year	Number of employee jobs	Comments
2015	48,000	The number of employee jobs in Swale increased between 2015 and 2016 by 2%, and remained at 49,000 in 2017. Records are currently available only for three years as the method of collection changed in 2015, to improve coverage by including PAYE based businesses with employment counts of less than 20.
2016	49,000	
2017	49,000	

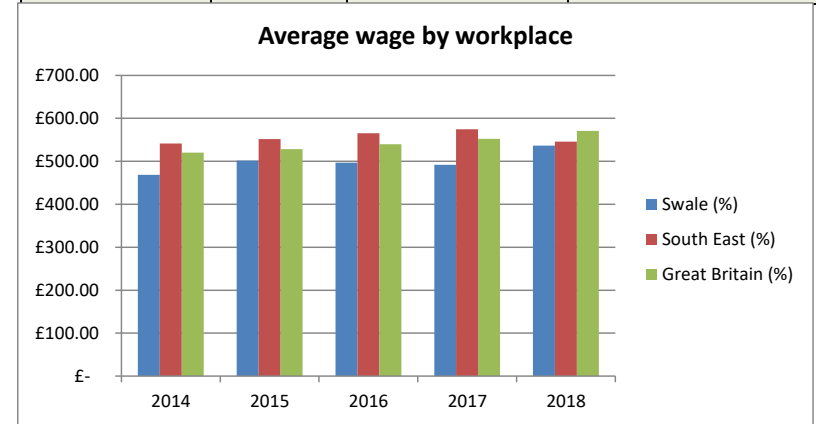


## Swale Economic Regeneration Data

Unemployment						
Source: ONS Claimant Count by sex and age				Latest data: November 2018		
Frequency of data: Monthly				Next release date: January 2019		
Comments						
Of those unemployed for longer than six months, the number in Swale decreased by 4% between October and November compared to a 3% decrease in the South East and Great Britain.						
Months	Aged 18-24	18-24 (%)	Aged 24-49	24-29 (%)	Aged 50+	50+ (%)
Jul'18	625	5.5	1210	2.7	680	2.4
Aug'18	630	5.5	1265	2.8	715	2.5
Sep'18	640	5.6	1285	2.8	730	2.5
Oct'18	680	5.9	1300	2.9	710	2.5
Nov'18	700	6.1	1330	2.9	725	2.5

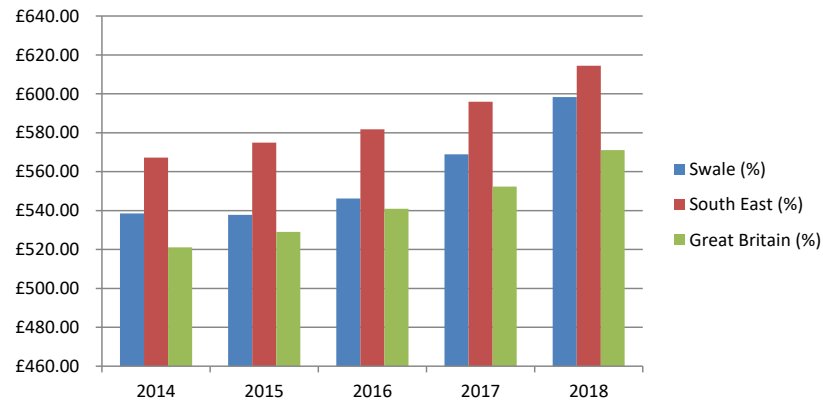


Average wage of those working in Swale			
Source: ONS annual survey of hours and earnings		Latest data: 2018	
Frequency of data: Annual		Next release date: Autumn 2019	
Definition			
The data shows the median earnings in pounds for employees who are working in Swale on adult rates, before tax, national insurance or other deductions, and excludes payments in kind.			
Years	Swale (%)	South East (%)	Great Britain (%)
2014	£ 468.40	£ 541.70	£ 520.40
2015	£ 501.60	£ 552.00	£ 528.50
2016	£ 497.00	£ 565.40	£ 540.10
2017	£ 491.80	£ 574.90	£ 552.30
2018	£ 536.80	£ 546.00	£ 570.90



## Swale Economic Regeneration Data

Average wage of those resident in Swale			
Source: ONS annual survey of hours and earnings		Latest data: 2018	
Frequency of data: Annual		Next release date: Autumn 2019	
Definition			
The data shows the median earnings in pounds for employees living in Swale. The wage figure reflects gross pay before tax, national insurance or other deductions, and excludes payments in kind.			
Years	Swale (%)	South East (%)	Great Britain (%)
2014	£ 538.50	£ 567.20	£ 521.10
2015	£ 537.80	£ 574.90	£ 529.00
2016	£ 546.20	£ 581.80	£ 540.90
2017	£ 568.90	£ 595.90	£ 552.30
2018	£ 598.40	£ 614.50	£ 571.10



Swale Qualification Levels 16-64					
Source: ONS annual population survey				Latest data: 2017	
Frequency of data: Annual				Next release date: Spring 2019	
Definition					
The figures show the total number of people who are qualified at a particular level and above. The figures are not additive, so NVQ1 and above also represents those in the NVQ2, 3, 4 categories.					
	2013 (%)	2014 (%)	2015 (%)	2016 (%)	2017 (%)
NVQ4 and above	27	27.9	23.9	33.5	22.6
NVQ3 and above	47.4	45.7	49.1	54.2	44.5
NVQ2 and above	73.5	65.2	72.1	74.8	68.7
NVQ1 and above	86.4	84.6	86.4	86.1	80.7
Other qualifications	5.3	6.8	#	#	11
No qualifications	8.3	8.5	10.2	8.9	8.3

